



# **VDOT TRANSPORTATION UPDATES**

## Construction and Development

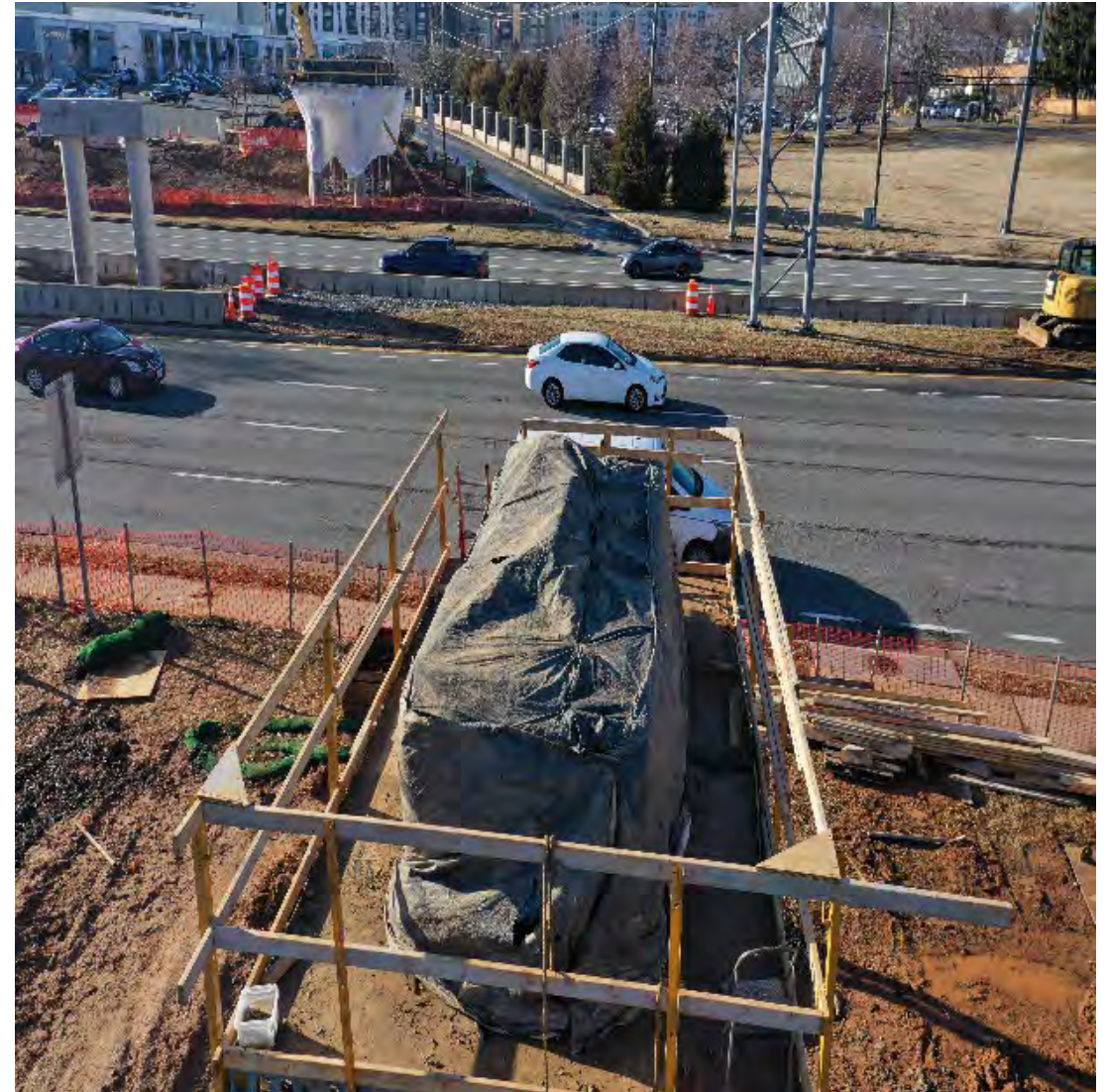
| Sean Nelson & Hal Jones

February 21, 2025

# Construction Updates

## US 29/Hydraulic Rd Design-Build Project

- Punch list developed with City on roundabout, shared use path, Brandywine & Michie elements
- Pedestrian bridge element construction well underway
- Installing MSE Walls for ramp on NB Rt. 29 (east side)
- Forming east side pier table
- Beam erection anticipated in April
- Completion October 31, 2025



# Construction Updates

## Albemarle Bundle #2 Design-Build Project

- Right of Way plans for all elements except Rte. 20 & Rte. 53 Roundabout have been submitted
- Right of Way acquisition/Utility relocations for Rte. 240/250/680 Roundabout anticipated to begin this month
- Construction work to begin in April
- Rte. 680 Bridge replacement accelerated & added to roundabout work
- General sequence of element construction:
  - Rte. 240/250/680 Roundabout
  - Rio Road/John Warner Pkwy Roundabout
  - Rio Road/Belvedere Blvd Continuous Green-T
  - 5th Street Extended/Old Lynchburg Road Roundabout
  - Rte. 20/53 Roundabout

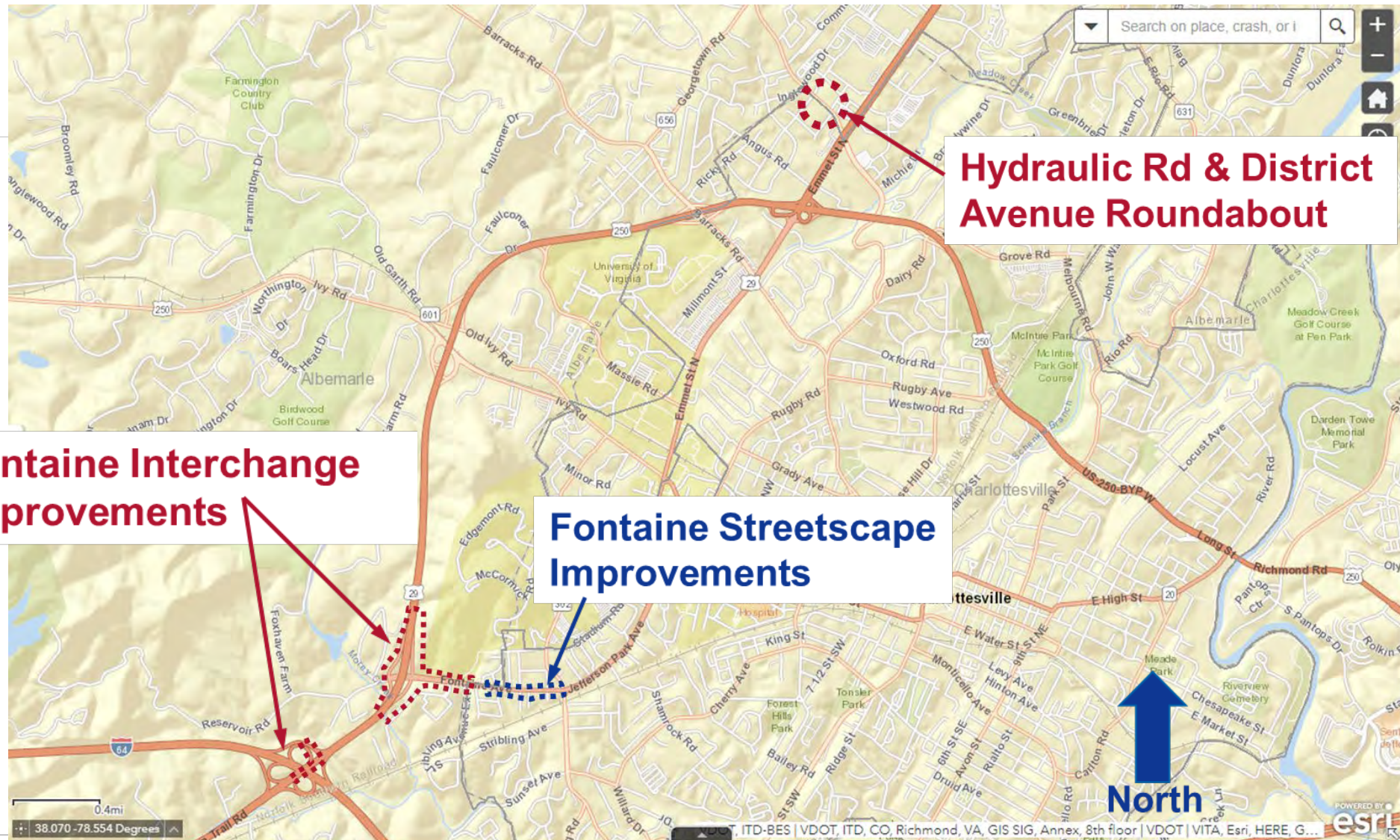
# Projects in Construction

- Old Ivy Road Bridge Over 29/250 Bridge Replacement
- Long-term closure with detour started on February 17<sup>th</sup>
  - WB Lane closed at bridge – EB lane open to one-way traffic
- **Scheduled completion Fall 2026**



# Fontaine and Hydraulic DB Bundle

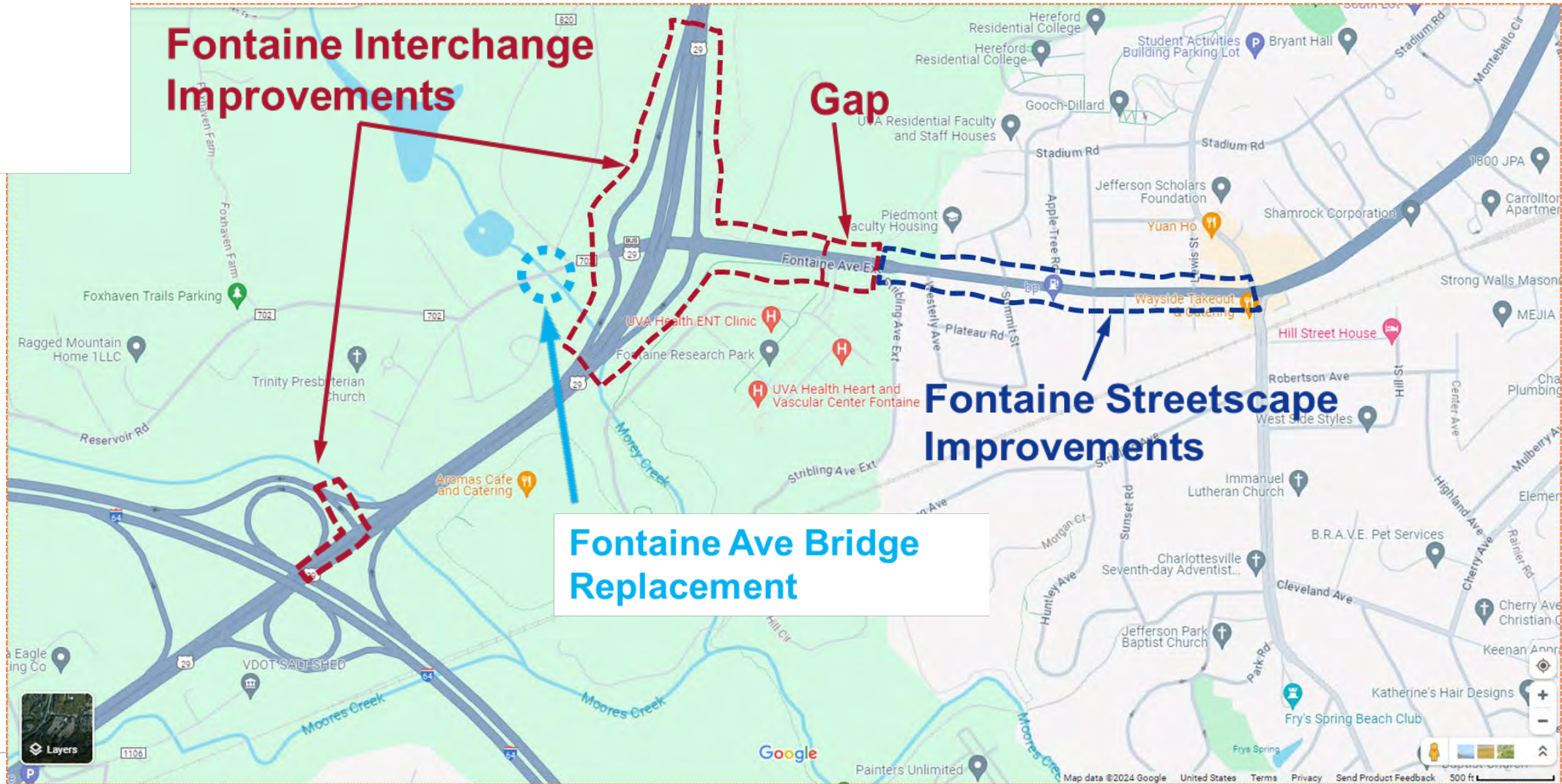
## Project Element Locations





# Fontaine and Hydraulic DB Bundle

## Fontaine Ave. Project Elements



# Fontaine and Hydraulic DB Bundle

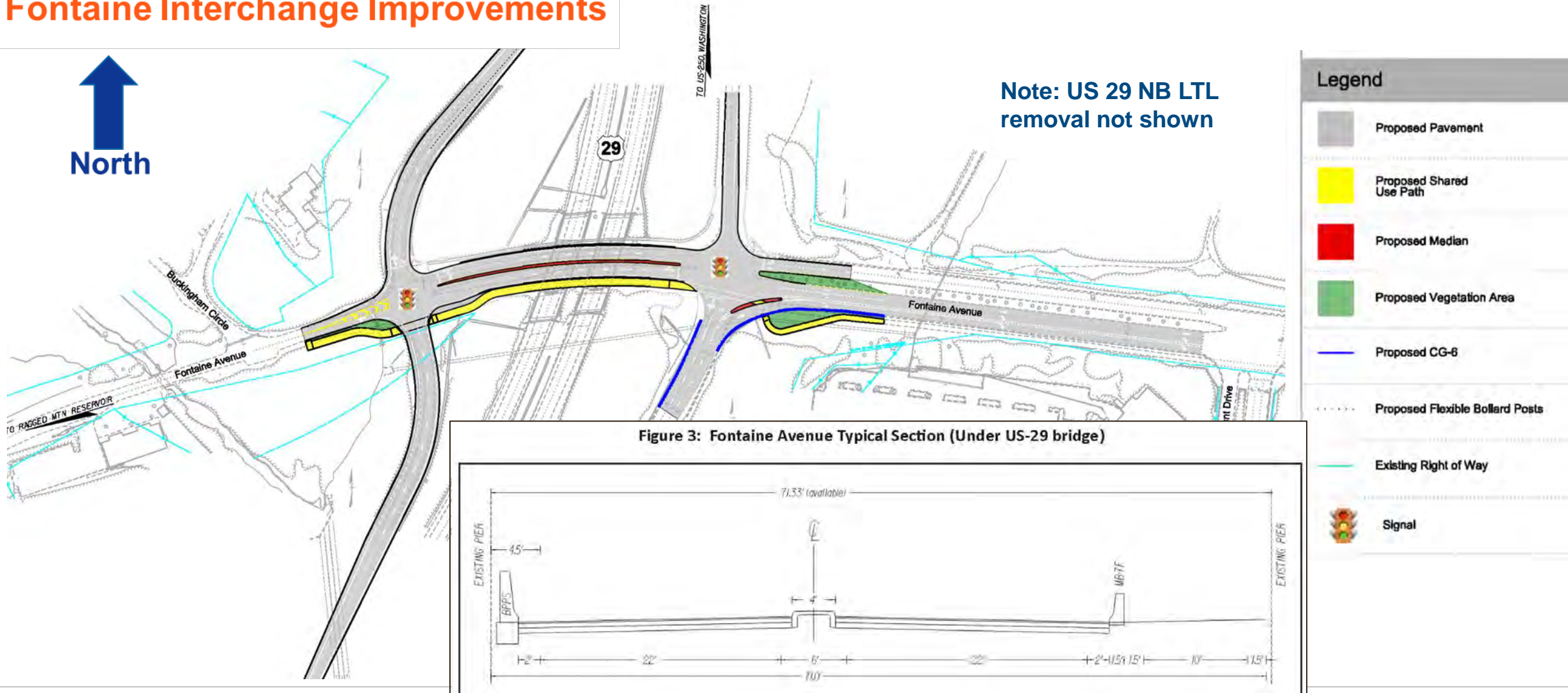
## Anticipated Schedule

- Request for Qualifications (RFQ) - March 7
- Statements of Qualifications Due - April 27
- Public Hearing – May 21 or 22 (tentative)
- Request for Proposals (RFP) – June 27
- CTB Award – December 2025
- Notice to Proceed – December 2025
- Final Completion – Fall 2029



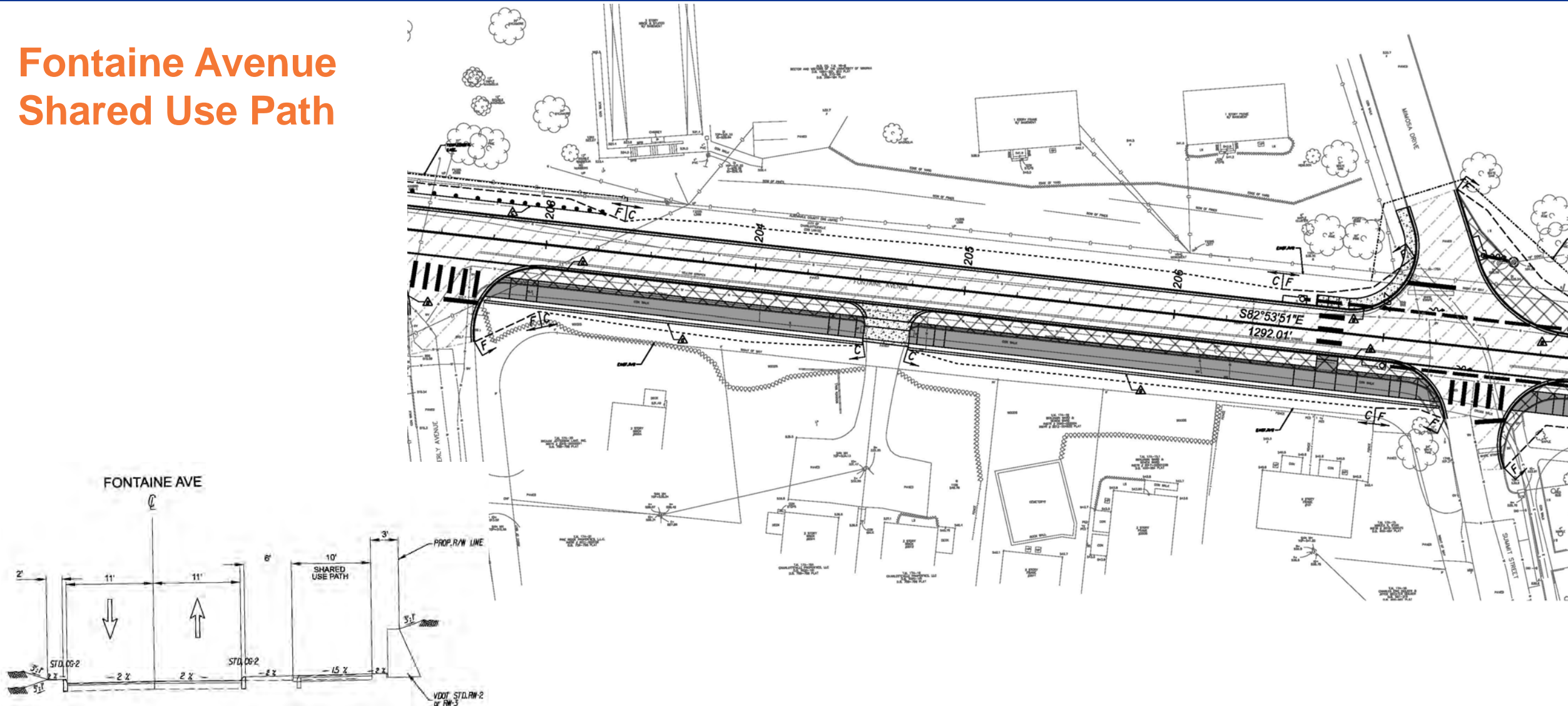
# Fontaine and Hydraulic DB Bundle

## Fontaine Interchange Improvements



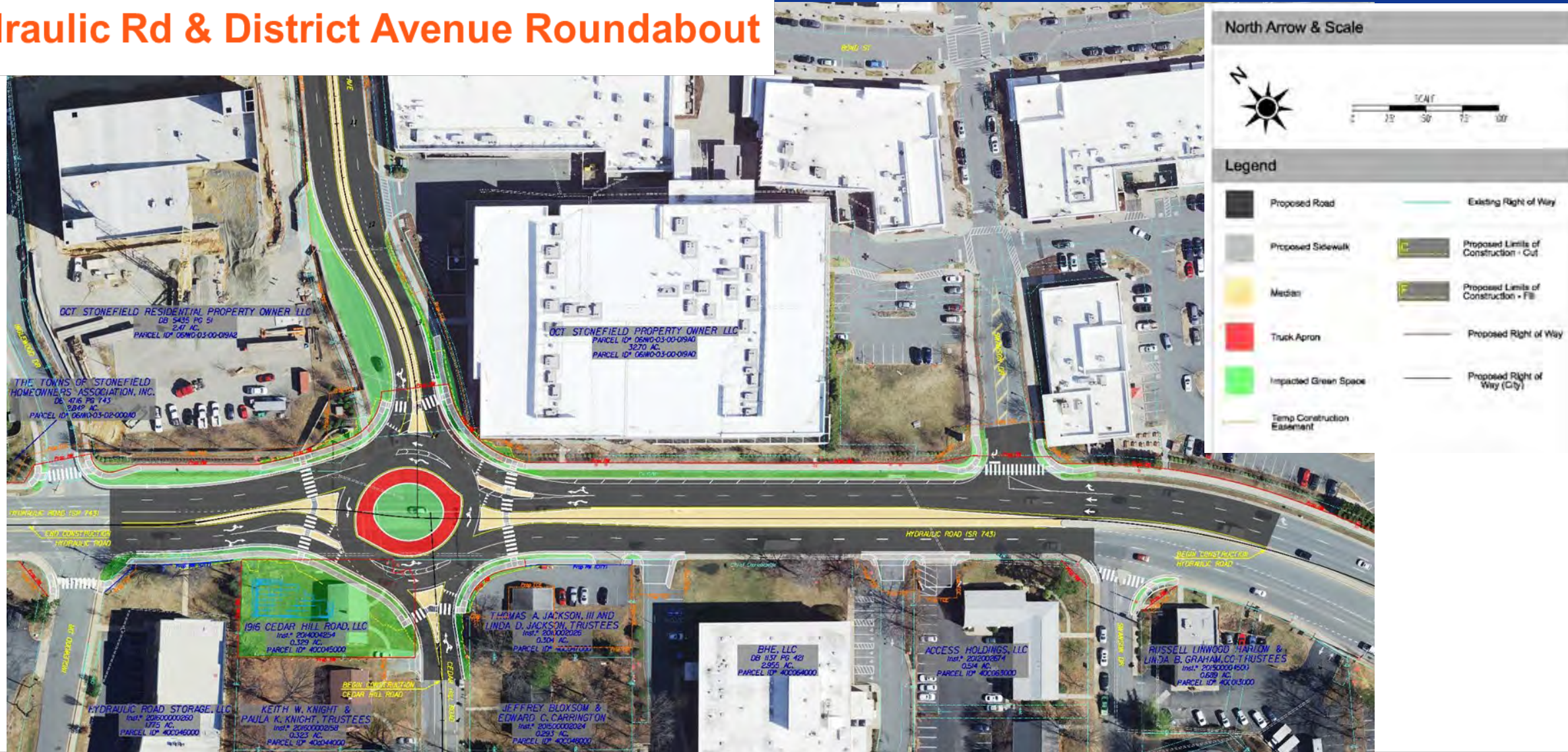
# Fontaine and Hydraulic DB Bundle

## Fontaine Avenue Shared Use Path





## Hydraulic Rd & District Avenue Roundabout





# Projects In Design

- I-64 at Exit 107 Park and Ride – Fall 2025 Advertisement
- I-64 Afton Mountain Interchange Lighting at Exit 99 – Summer 2025 Advertisement
- US 29 Shared Use Path – Fall 2025 Advertisement
- US 250 at Route 20 Intersection Corridor Improvements – Summer 2026 Advertisement
- 5<sup>th</sup> Street Trail and Hub – Fall 2025 Advertisement