

Thomas Jefferson Planning District Commission

Regional Transportation and Transit Planning Team



Christine Jacobs
Executive Director



Lucinda Shannon
Senior Regional
Planner



Sarah Simba
Regional Planner II



Vacant
Transportation
Director



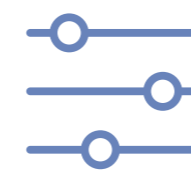
Sara Pennington
Senior Regional
Planner



Gorjan Gjorgjievski
Regional Planner II

Transportation/Transit

Charlottesville-Albemarle

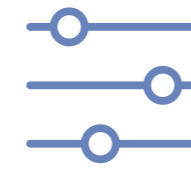


Charlottesville-Albemarle Metropolitan Planning Organization (CA-MPO)

- Responsible for continued, cooperative, and comprehensive transportation planning.
- Coordinates activities of various transportation-related agencies that have impact on Long Range Plan and Transportation Improvement Program
- Policy Board and two Advisory Sub-Committees
- Voting Members: 2 Charlottesville, 2 Albemarle, 1 VDOT
- Non-Voting Members: UVA Office of the Architect, TJPDC, Citizens Advisory Committee, Federal Transit Administration, Federal Highway Administration, VDOT, Jaunt, CAT, DRPT
- Funding 80% Federal (FTA/FHWA), 20% Local (Cville/Albemarle through per-capita funding)

Transportation/Transit

Charlottesville-Albemarle

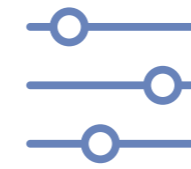


Regional Transit Partnership (RTP)

- Advisory board established to build relationships and provide recommendations to decision-makers on transit-related matters.
- Developed Albemarle County Transit Expansion Study (Micro-CAT), Regional Transit Vision Plan, Regional Transit Governance Study
- Currently working on establishing a Regional Transit Authority
- Voting Members: 2 Charlottesville, 2 Albemarle, DRPT, Jaunt Urban, Jaunt Rural, UVA/UTS
- Non-Voting Members: CAT staff, Jaunt staff, Alb Co Executive Office, Alb Co Student Trans, CA-MPO, Cville Executive Office, Cville Student Trans, RideShare, CAA, PED, UVA Hospital
- Funding 100% Local (50% Alb Co, 50% Cville)

Transportation/Transit

Charlottesville-Albemarle

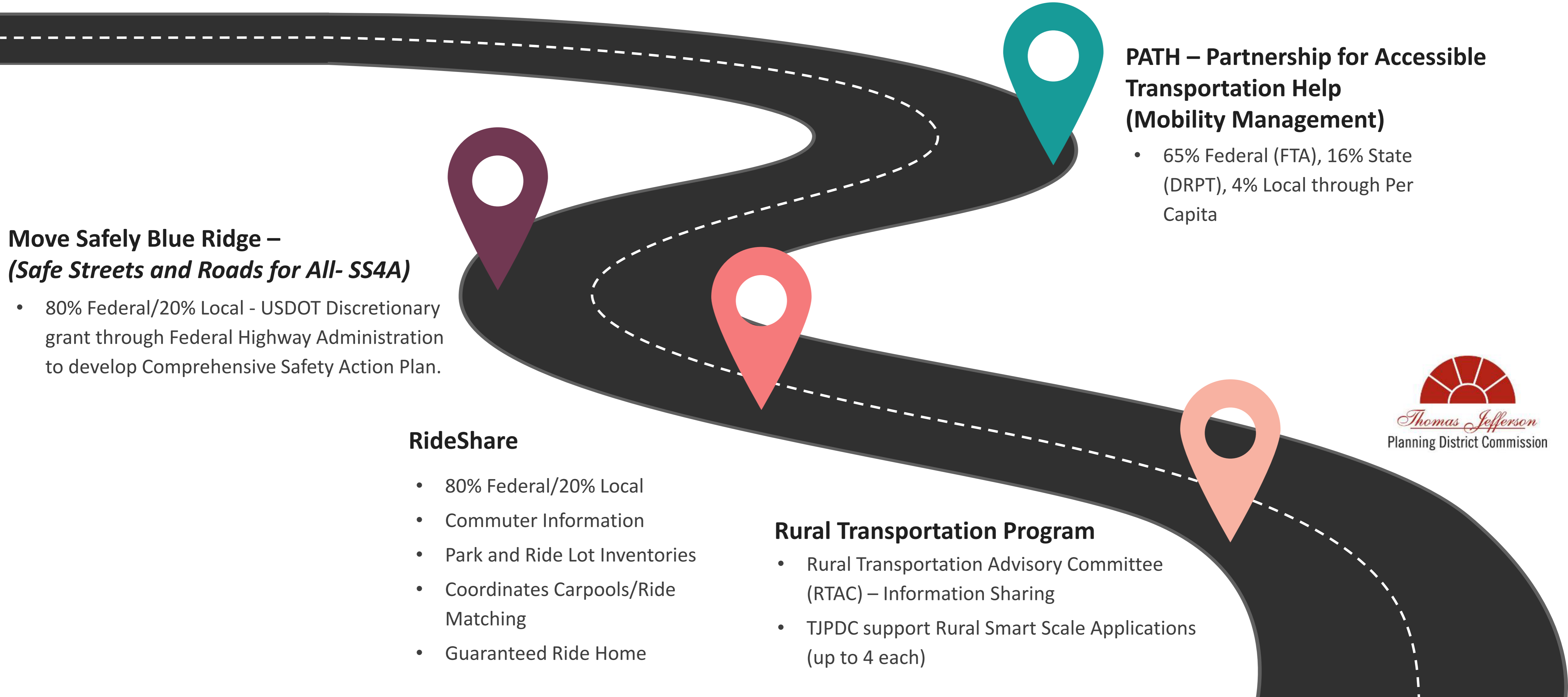


Smart Scale

- State's primary means of distributing limited tax dollars for critical transportation needs.
- Evaluates potential transportation projects "based on key factors like how they improve safety, reduce congestion, increase accessibility, contribute to economic development, promote efficient land use, and affect the environment."
- Anticipated benefits are calculated and the projects are scored and ranked. CTB makes selections.
- TJPDC - up to 4 applications
- CA-MPO - up to 4 applications
- The TJPDC supports Cville/Alb and/or transit agencies in their Smart Scale applications (up to 4 each)

Transportation/Transit

Region 10 – Albemarle, Charlottesville, Fluvanna, Greene, Louisa, and Nelson



Move Safely Blue Ridge – (Safe Streets and Roads for All- SS4A)

- 80% Federal/20% Local - USDOT Discretionary grant through Federal Highway Administration to develop Comprehensive Safety Action Plan.

RideShare

- 80% Federal/20% Local
- Commuter Information
- Park and Ride Lot Inventories
- Coordinates Carpools/Ride Matching
- Guaranteed Ride Home

Rural Transportation Program

- Rural Transportation Advisory Committee (RTAC) – Information Sharing
- TJPDC support Rural Smart Scale Applications (up to 4 each)

PATH – Partnership for Accessible Transportation Help (Mobility Management)

- 65% Federal (FTA), 16% State (DRPT), 4% Local through Per Capita



Thomas Jefferson Planning District Commission

PATH (Mobility Management) –
Lucinda Shannon



Mobility Management Program

Federal Transit
Administration
Section 5310 Grant



Increase public transit projects to exceed
ADA requirements (42 U.S.C. 12101 ET
SEQ.)



Improve access to fixed-route services
and decrease reliance on paratransit



Build alternatives to public transit that
assist seniors and individuals with
disabilities with transportation

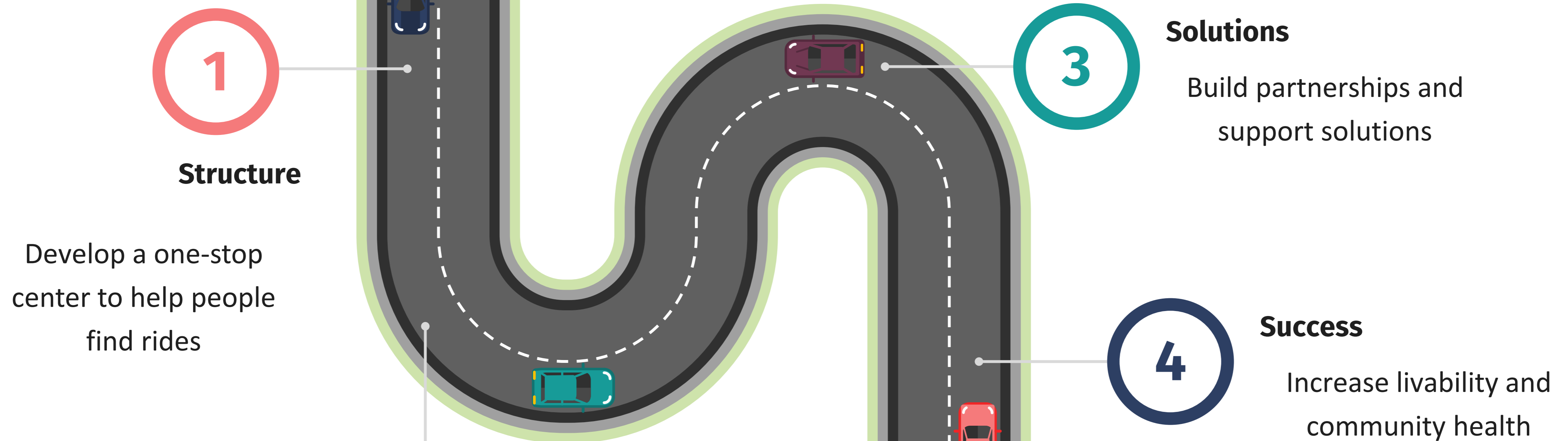
PATH Public Services

PATH is a free informational hub for all transportation options in the City of Charlottesville and Albemarle, Nelson, Greene, Louisa, and Fluvanna counties.

By centralizing assistance through an accessible and user-friendly platform, PATH aims to ensure that every individual can navigate their journey with confidence and ease.

Anyone can call 888-879-7379 or visit www.pathva.org to find their ride.

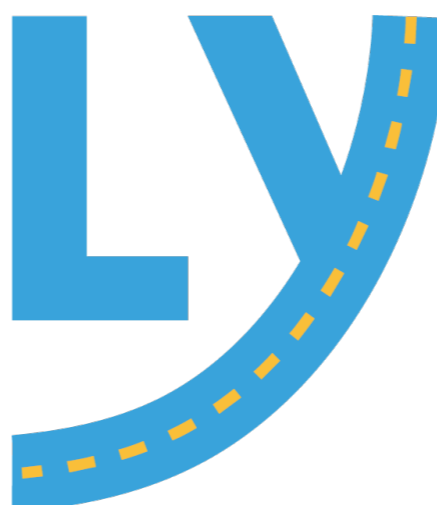
PATH Community Services



Thomas Jefferson Planning District Commission

Move Safely Blue Ridge – *Safe Streets and Roads for All (SS4A)* –

Gorjan Gjorgjievski and Sarah Simba

move
SAFELY
blue ridge 

move **SAFELY** blue ridge

...the region's community driven plan to reduce roadway fatalities and serious injuries for all road users



Safe Streets and Roads for All (SS4A)

Bipartisan Infrastructure Law established SS4A discretionary program

Supports USDOT National Roadway Safety Strategy

Long-term goal of zero traffic fatalities using a Safe Systems Approach



Comprehensive Safety Action Plan Components

Leadership commitment

Oversight group to develop, implement, and monitor

Comprehensive safety data analysis

Robust public and stakeholder engagement

Inclusive and representative process in the plan development

Evaluation of processes and policies

Comprehensive identification/prioritization of projects and strategies

Ongoing monitoring and Reporting

Budget and Specific Components

\$857,600 - FHWA Federal Funding

\$214,400 – Local Match from six member jurisdictions

\$1,072,000 - Total

Regional Components include locality contributions assessed on a per capita basis

Locality-specific component based on requested scope of work from each jurisdiction:

Albemarle-specific Components: \$84,000

\$33,000 for public engagement

Charlottesville-specific Components: \$205,000

\$121,000 estimated for charrette and project design demonstration

Fluvanna, Greene, Louisa and Nelson counties-specific components: \$72,000 each

\$33,000 for public engagement

Solutions will be integrated across four Es of roadway safety

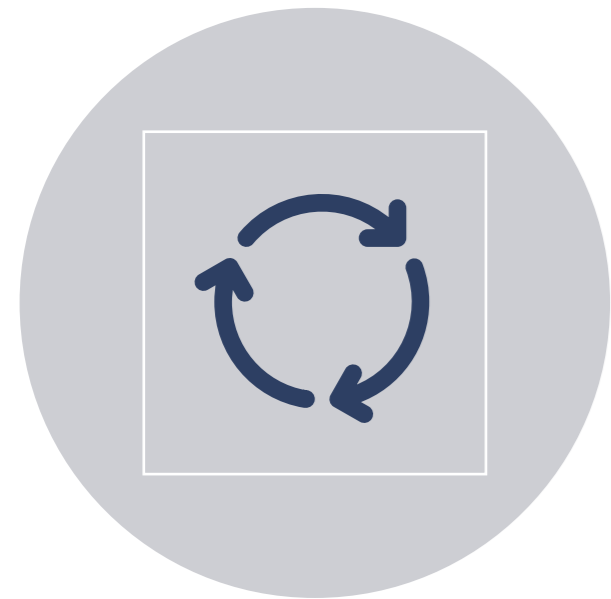
Engineering:
Designing safer
facilities for all
users

Education:
Building a culture
of traffic safety

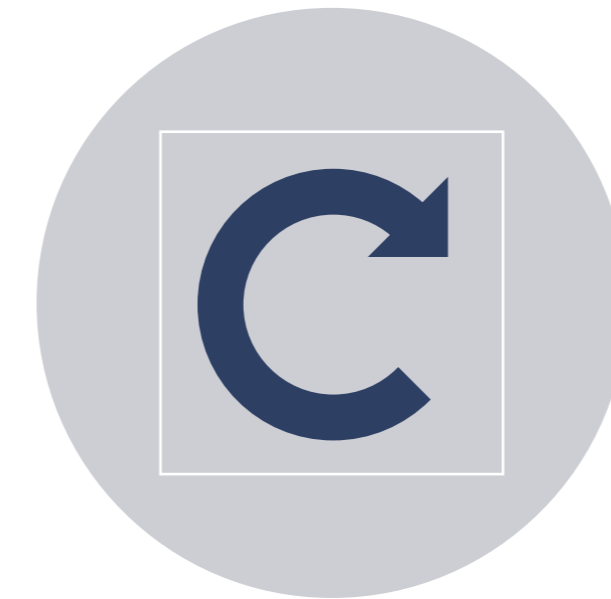
Enforcement:
Reinforcing safe
travel behaviors

Emergency
Response: Saving
lives through
rapid response

Process Overview



Step 1: Identify Issues and Opportunities (Winter 2023/Spring 2024)



Step 2: Establish Priorities (Summer 2024/Fall 2024)



Step 3: Develop Strategies (Winter 2024)



Step 4: Plan Development and Review (Spring 2025)

Plan Development

Collect & Analyze Data

Visit Sites & Develop Countermeasures

Prioritize Strategies & Projects

Draft & Revise Safety Action Plan

Fall 2023

Spring 2024

Fall 2024

Spring 2025



Engagement


Round 1:
Identify Values, Issues,
and Opportunities



Round 2:
Collaborate on
Strategies & Priorities



Round 3:
Provide Feedback
on Safety Action
Plan

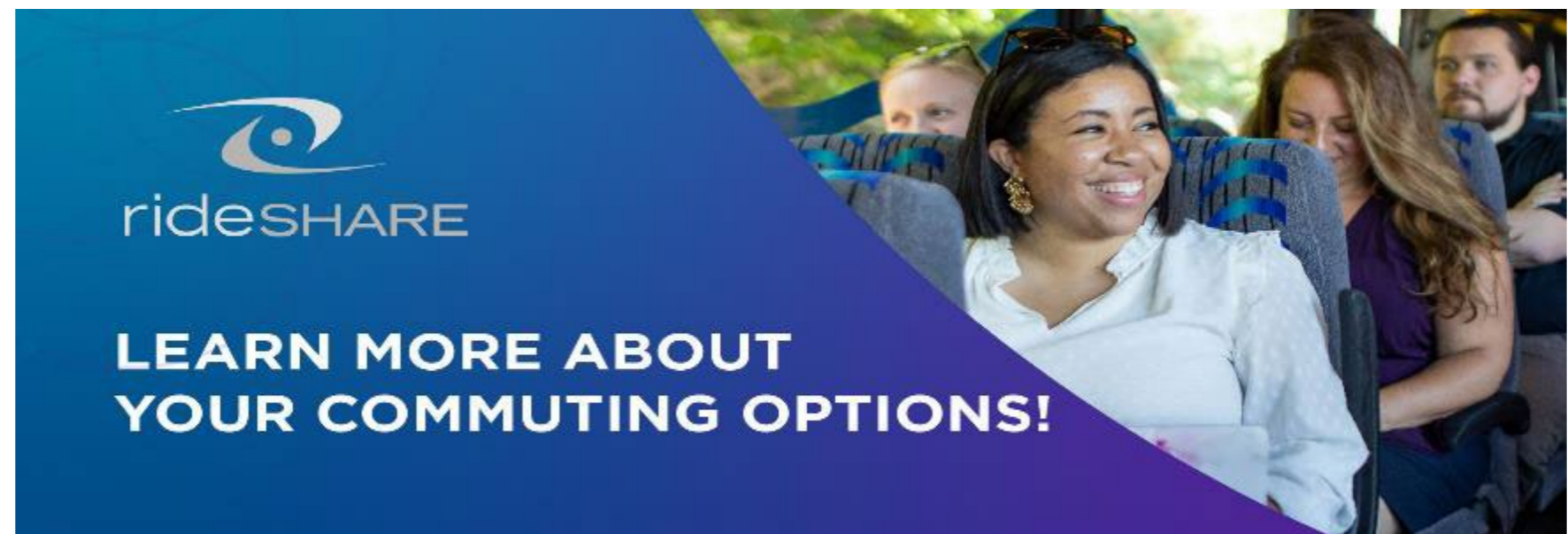


Thomas Jefferson Planning District Commission

RideShare -

Sara Pennington





ConnectingVA App

- Offers ride matching, trip planning, and rewards for logged trips



Guaranteed Ride Home

- 5 free rides in emergencies



Park and Ride Lots

- 30 across the RideShare service area (TJPDC & CSPDC)



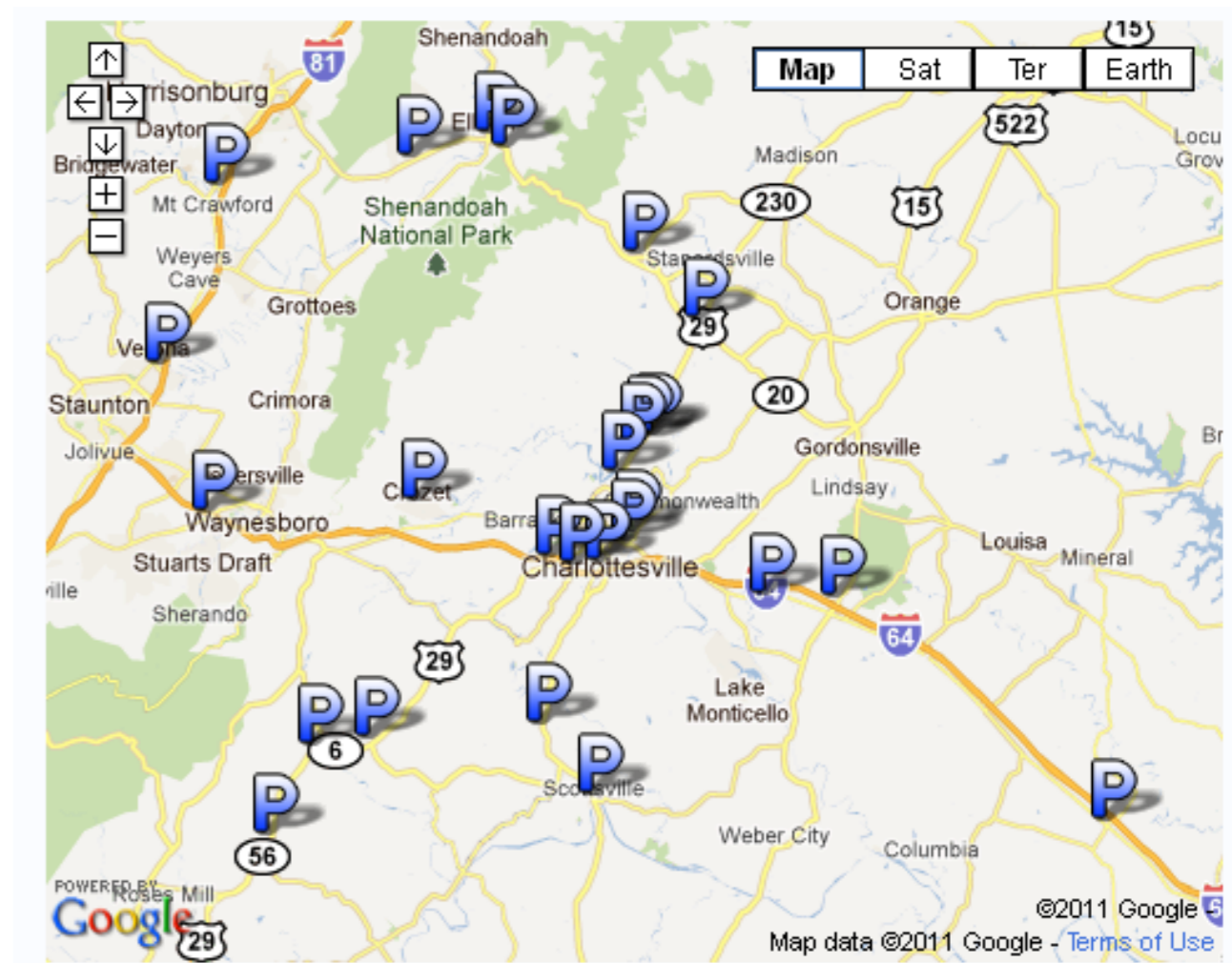
WWW.RIDESHAREINFO.ORG

Track Your Rides & Earn Rewards! Download the Smart Phone App Today!

ACCESS THROUGH YOUR APP STORE BY SEARCHING 'RIDESHARE - RIDES & REWARDS'

Who's eligible?

- You are employed full-time or permanent part-time
- You are registered with RideShare
- You get to work one of the following ways at least twice a week:
 - Carpool
 - Vanpool
 - Public transit
 - Walk
 - Bike



View Map in Larger Window
 Click here for a printable PDF version of the Park & Ride map.

RideShare data for alternative transportation

Activity in Central Blue Ridge, VA



2,049 members



56,547 Reduced trips



\$4,437 rewards redeemed



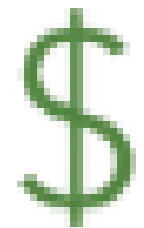
18,882 RideShare inquiries



1,699,294 Reduced Miles (VMT)



75,855 gallons of gas saved



\$1,031,313 saved



743 tons of emissions prevented

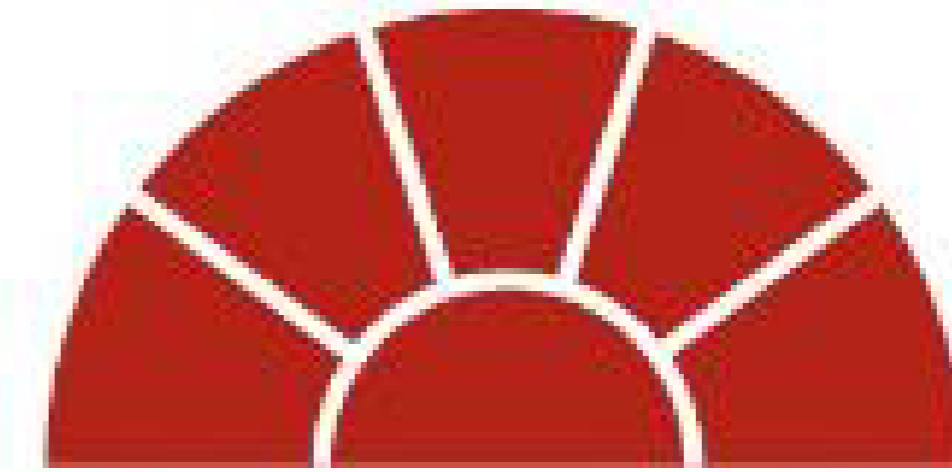


1,475,707 calories burned

Questions

For detailed information on the programs please do not hesitate to contact us:

- Christine Jacobs – cjacobs@tjpc.org
- Lucinda Shannon – lshannon@tjpc.org
- Gorjan Gjorgjievski – gorjang@tjpc.org
- Sarah Simba – ssimba@tjpc.org
- Sara Pennington – spennignton@tjpc.org



Thomas Jefferson
Planning District Commission