

FONTAINE PARK UPDATE

Land Use and Environmental Planning Committee Presentation

Fontaine Research Park Existing Conditions



Near-Term Master Plan

- A** Transit, parking, and amenity development
- B** Central spine with distinct neighborhoods
- C** Research/academic building
 - Approximately 250,000–350,000 GSF
 - Opportunity for theme-based, transdisciplinary research/academics
- D** Future building
 - Approximately 200,000–250,000 GSF



Projects In-Progress

Manning Institute of
Biotechnology
(350,000 GSF)

Roadway Infrastructure

Parking Garage
(1,275 spaces)

Central Energy Plant
(Zero Combustion)

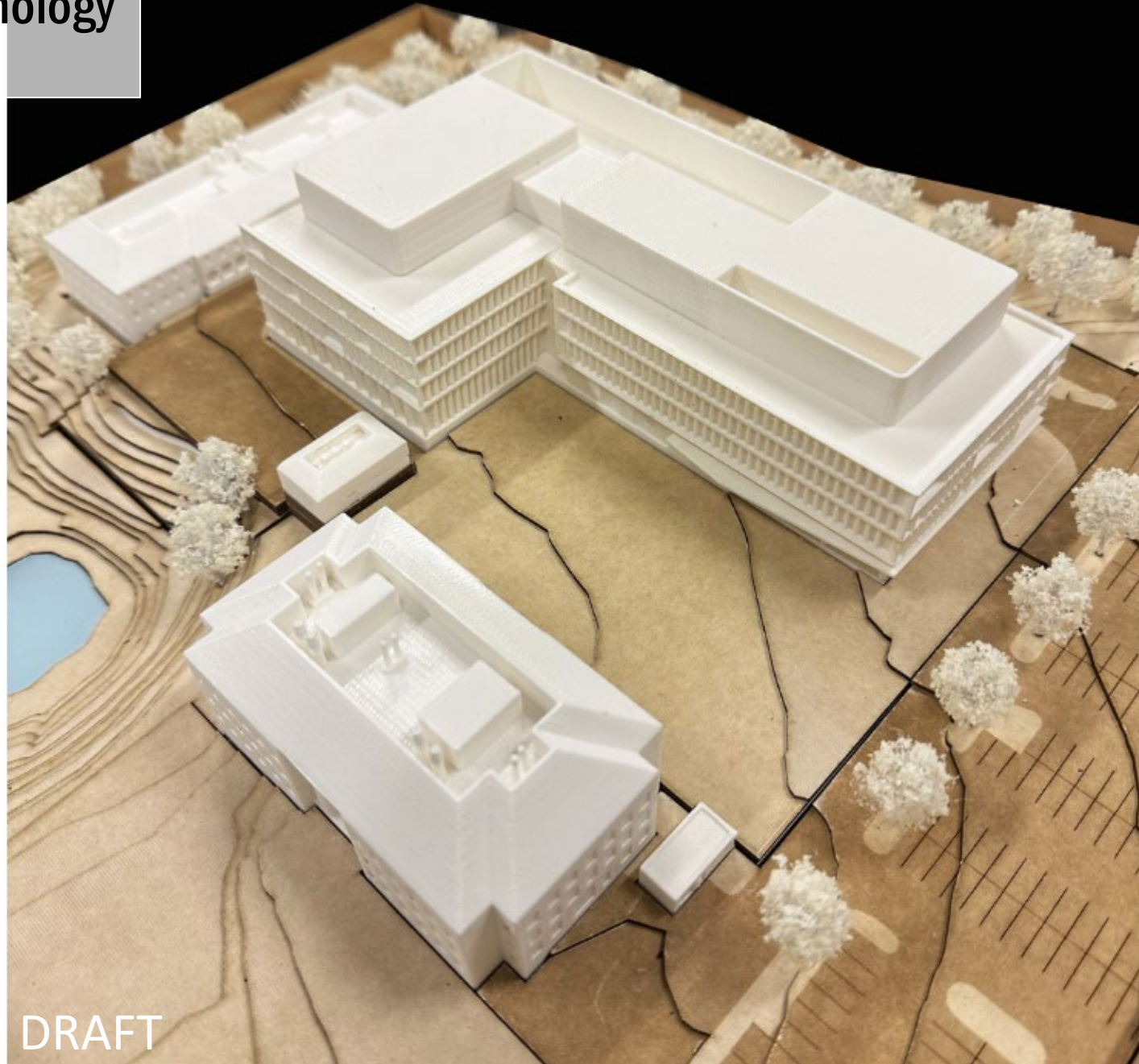
Next up:
Academic Data Center



Conceptual View of Research Neighborhood



Institute of Biotechnology Site Model

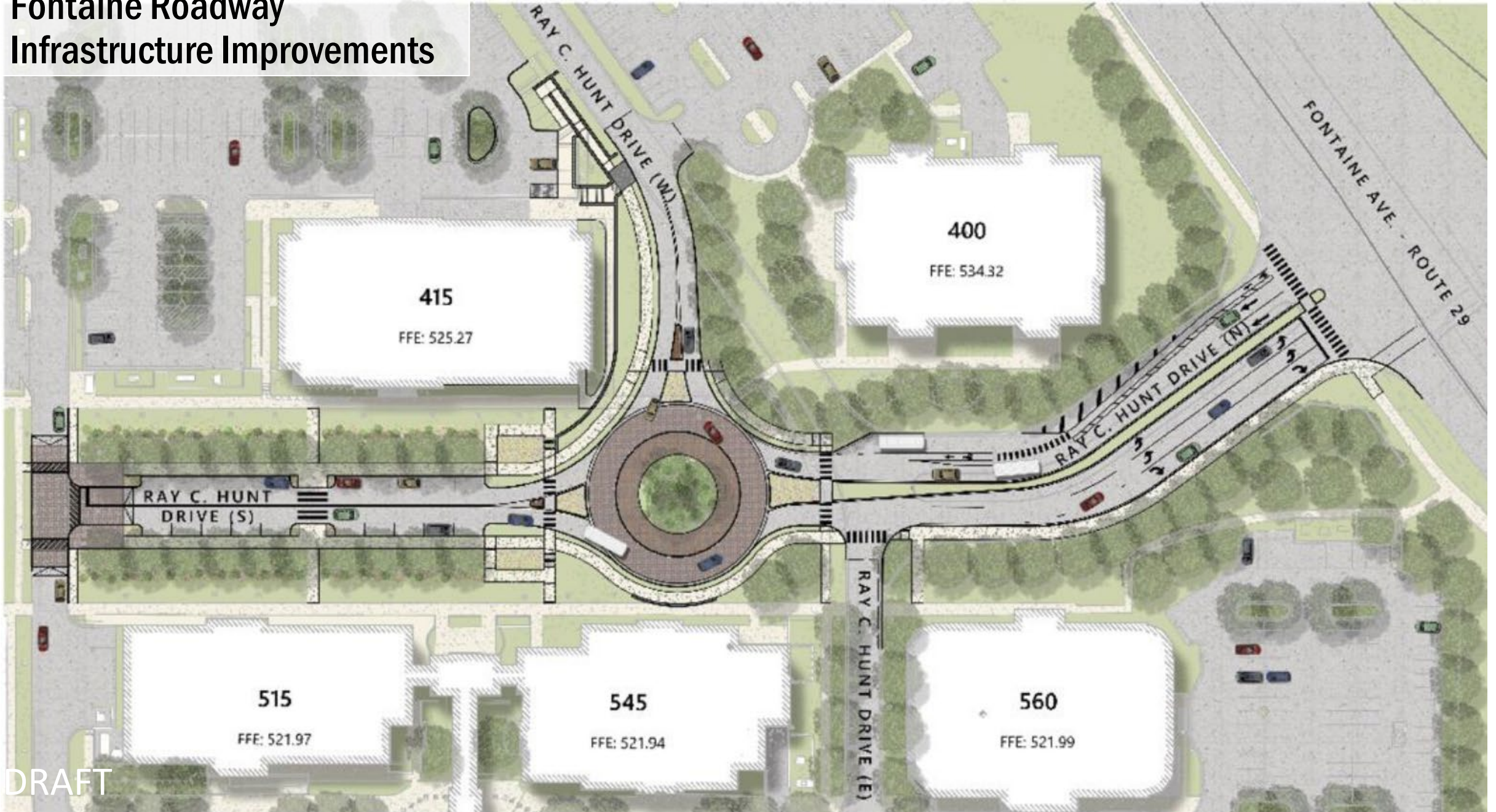


DRAFT

Conceptual View Upon Entering Fontaine



Fontaine Roadway Infrastructure Improvements



Fontaine Garage - Concept Plan



DRAFT



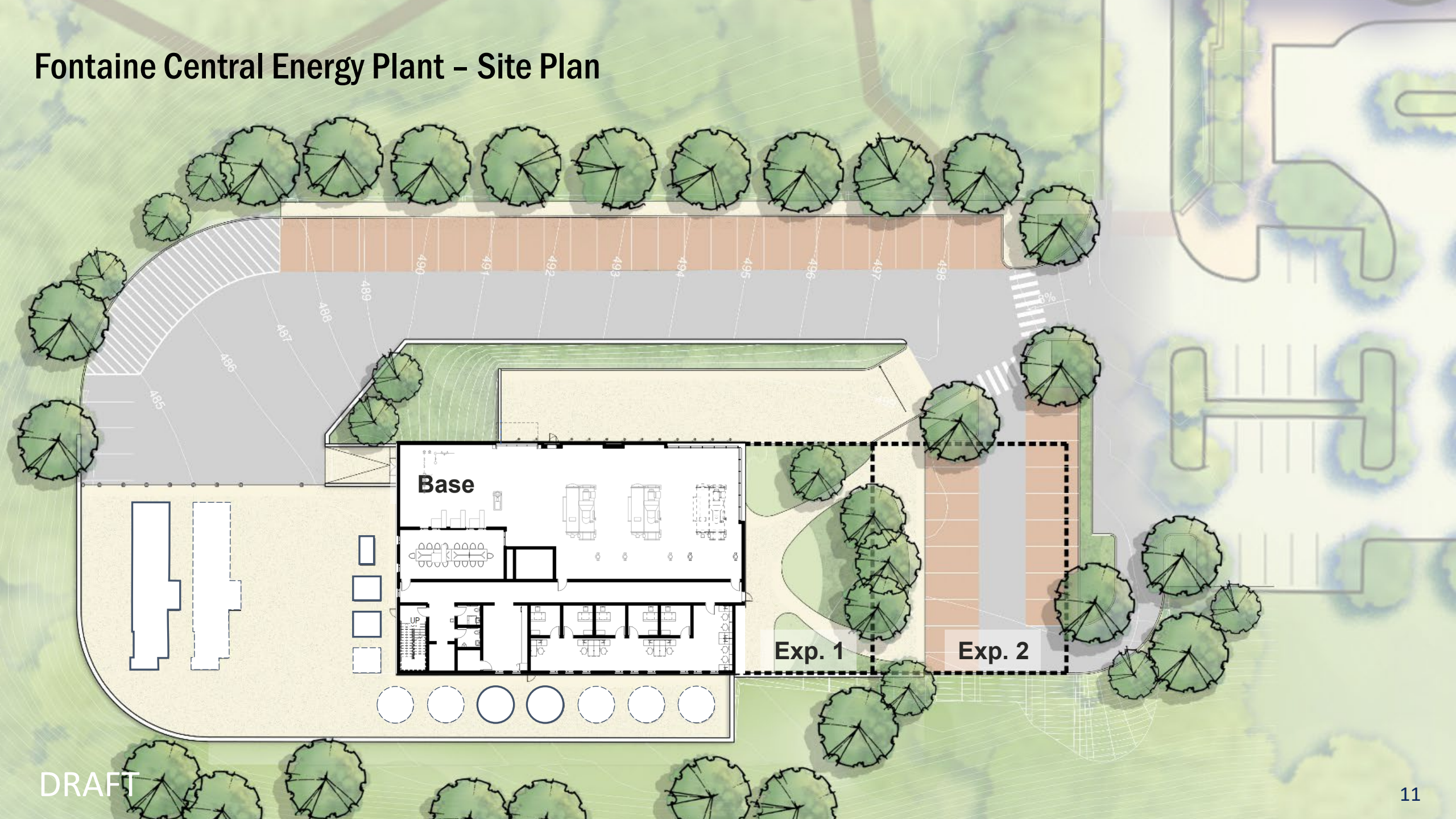
Proposed View from Ray C. Hunt Drive



Proposed View from Fontaine Avenue

DRAFT

Fontaine Central Energy Plant - Site Plan



DRAFT

Supporting Our 2030 Sustainability Goals

University Infrastructure

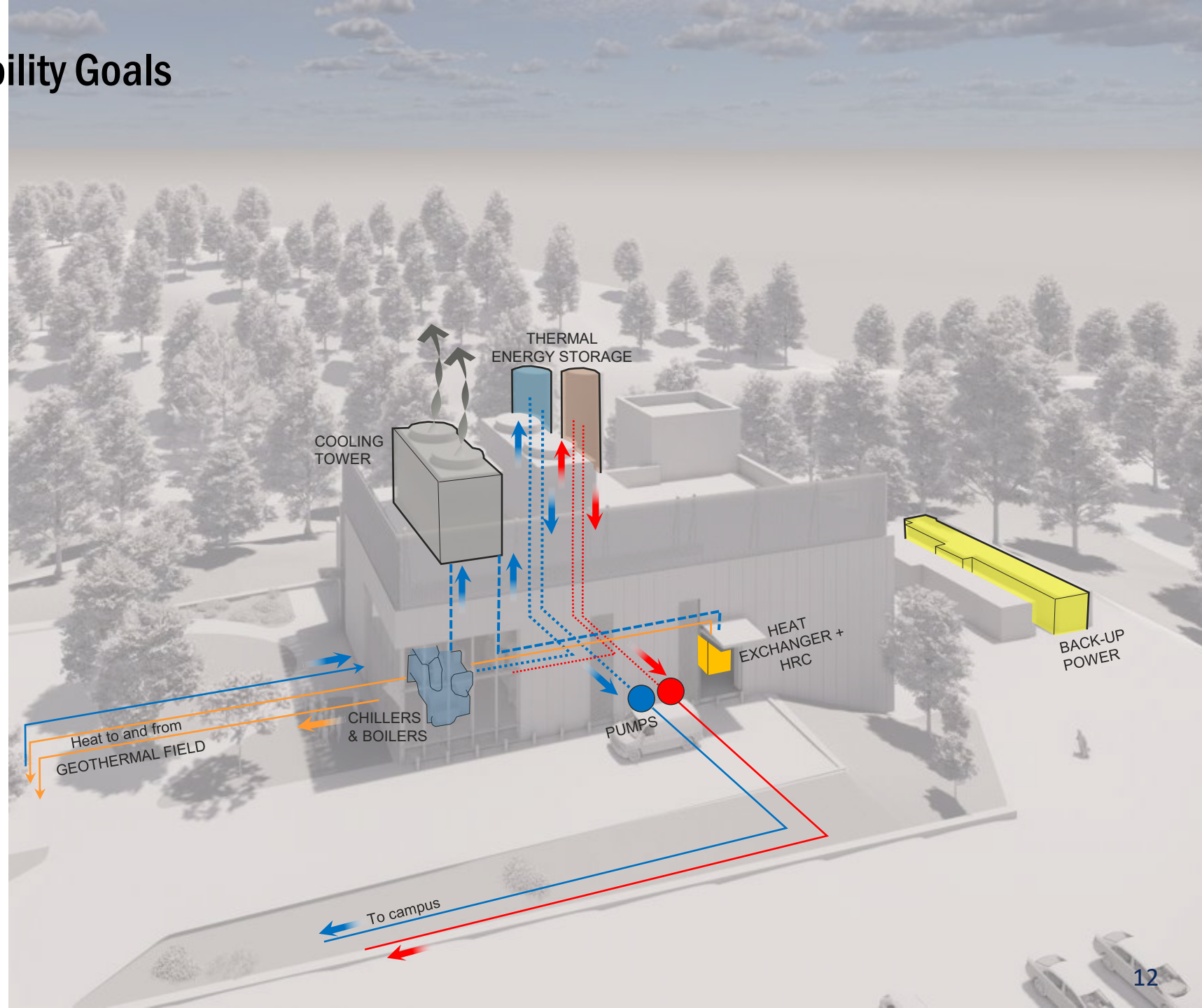
- Geo-exchange well fields
- Heat Recovery Chillers
- Thermal Storage Tanks
- High-Efficiency electric water heaters
- Zero combustion - Fossil Fuel Free

Site Related Strategies

- Light Pollution Reduction
- On-site Stormwater Management

Building Related Strategies

- Water use efficiency
- Optimized Energy Performance
- Whole Building Life Cycle Assessment
- Low Emitting Materials



Current View Looking South



DRAFT

Proposed View Looking South



DRAFT

THANK YOU!