



Land Use and Environmental Planning Committee

May 19, 2023



Process/Schedule



Project Overview



- Funded in 2016 through  SMART SCALE
- Multimodal improvements including:
 - Wider sidewalks, bike lanes, landscaping, ADA and pedestrian improvements, wayfinding, and signal upgrades.
 - Evaluate undergrounding overhead utilities
- E. Market Street
 - From 7th Street to 9th Street
- 9th Street
 - From E. Market Street to E. High Street
- E. High Street
 - From 9th Street to 10th Street

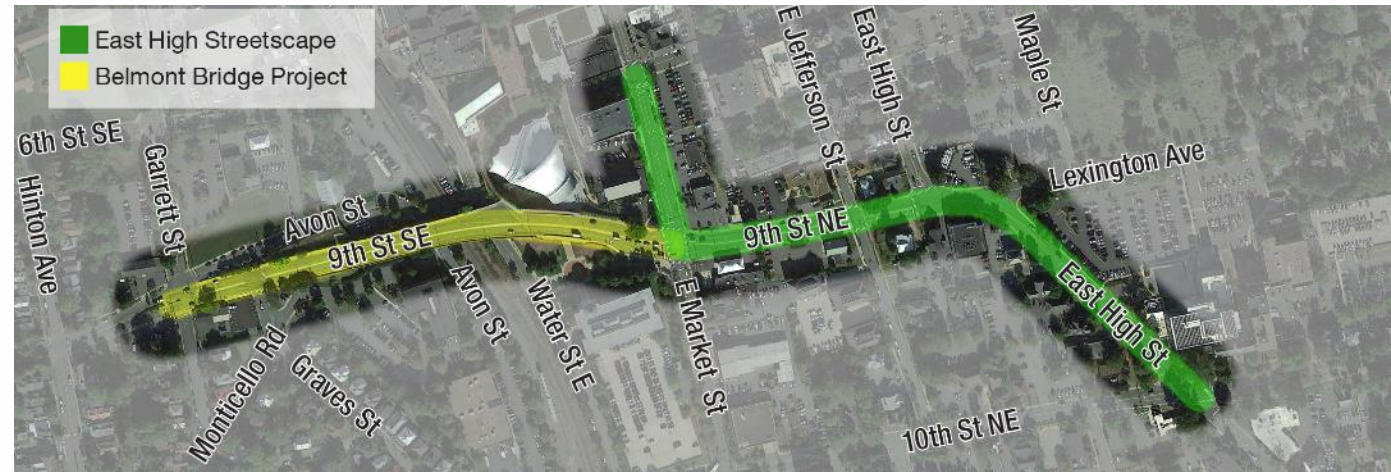
Total Budget: \$11,428,149

Smartscale - \$7,375,954

Betterments - \$4,052,195

Betterments

- Place overhead utilities underground
- Rivanna Distribution Watermain



Process/Schedule

Project Planning, Design, Public Outreach, Approvals - January 2018 to October 2019

COVID Impact and Financial Impact/Restructuring – March 2020 to October 2022

Right of way Acquisition – October 2022 – December 2023 - WE ARE HERE

Construction Begins – Late Summer 2024; Construction Ends – Winter 2025/2026



Public Engagement Overview



Visioning & Needs Assessment

As of October 2019



Steering Committee Meeting #1

17,500+

individual data points

EastHighStreetscape.org Website

1,000+

touch points

500+

written comments

Streetscape Summit

MetroQuest Survey

Steering Committee Meeting #2

Open House

Presentations to City Committees

Approval by Planning Commission

Conceptual Approval by City Council

Coordination with Active Developments

Prelim. Input from Board of Arch. Review

Key Takeaways

- Overall, pedestrian facilities and multimodal mobility is a priority
- Desire to provide a safe and walkable street that enhances neighborhood connections
- Utilize design features and proposed amenities to enhance the overall environment for all users

Design Public Hearing Approval by City Council



Vision & Needs Assessment

Common Themes and Key Takeaways



- **Key Words** | safe, walkable/pedestrian-friendly, functional

- **Priorities**

1. Pedestrian Facilities
2. Landscaping
3. Bicycle Facilities
4. Traffic and Travel Speeds
5. Lighting



- **Challenges** | traffic volumes, limited space/competing priorities, Lexington and E. High intersection

- **Outcomes** | conformance to Comprehensive Plan, City Council concept approval



Preliminary Design Development

Design Public Hearing – Key Themes & Takeaways



46

attendees

30+

written comment
forms or e-mails

Key Takeaways

- Overall support of bicycle and pedestrian improvements
- Desire for planting palette enhancements including larger canopy trees
- Interest in how planned Tarleton Oaks development works with streetscape
- Support for conversion of existing overhead utilities to underground
- Concerns expressed regarding traffic
- Challenges with competing priorities in limited space and need for compromise

Recommended Preliminary Design



Project Location

Charlotteville, Virginia

North Arrow & Scale

Graphic scale in feet: 0, 20, 40, 60, 80, 100

Legend

- Proposed Asphalt
- Proposed Sidewalk
- Proposed Stormwater Best Management Practice (BMP)
- Proposed Green Bike Pavement Marking
- Area Under Further Study
- Proposed Trees
- Existing Right of Way
- Proposed Right of Way Line
- Proposed Permanent Easement
- Proposed Temp. Construction Easement
- Proposed Curb
- Proposed Pedestrian Signal
- Proposed Signal

Contact Information

Written comments may be sent by June, 22 2019 to:
 Tim Motsch
 City of Charlottesville
 810 East Market Street
 P.O. Box 911
 Charlottesville, Va. 22902

E-mail comments may also be sent to:
 motscht@charlottesville.org

Visit www.EastHighStreetscape.org for more information

East High Streetscape
 Charlottesville, Virginia

State Project: U000-104-298
 UPC: 10480

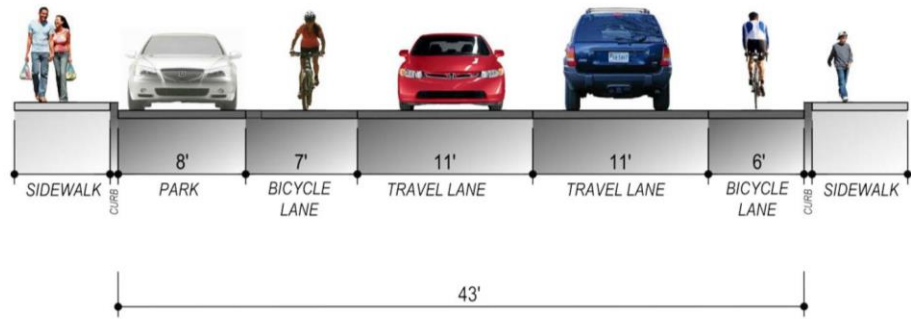
These plans are unfinished and unapproved and are not to be used for any type of construction or the acquisition of right of way. Preliminary easements for utility relocations are approximate only and subject to change as project design is finalized.

Imagery Courtesy of the Commonwealth of Virginia copyright 2018

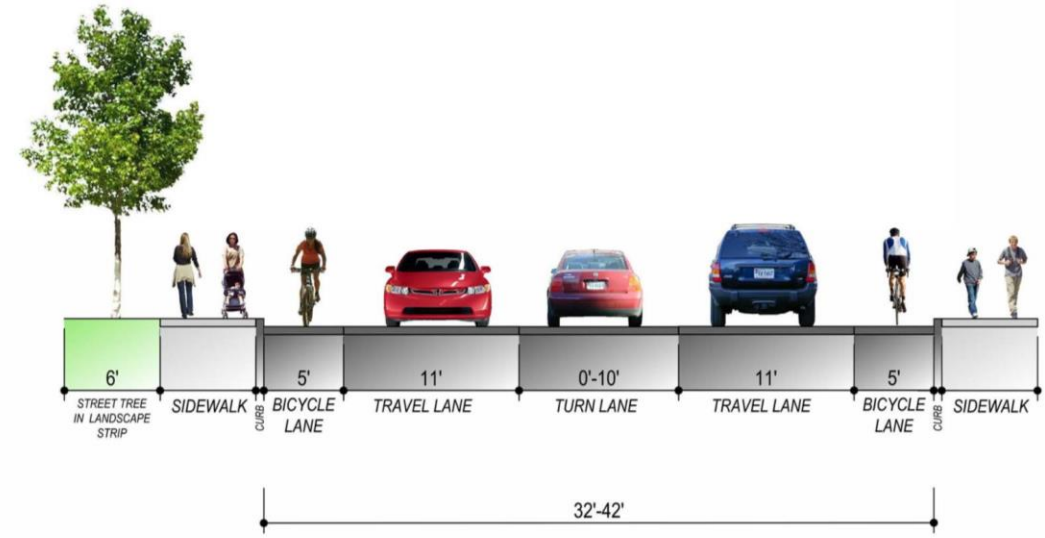


Recommended Preliminary Design

E. Market Street/9th Street



SECTION A - MARKET ST BETWEEN 8TH ST. AND 7TH ST.

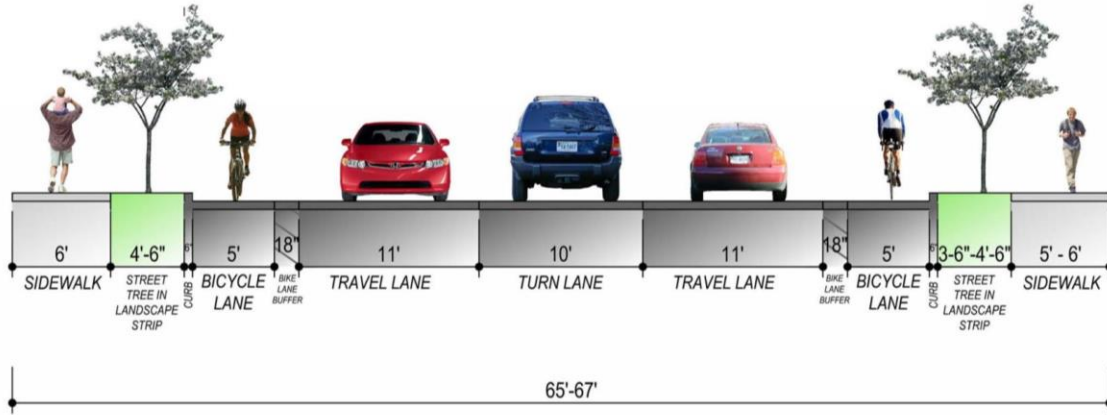


SECTION B - MARKET ST BETWEEN 8TH ST. AND 9TH ST.

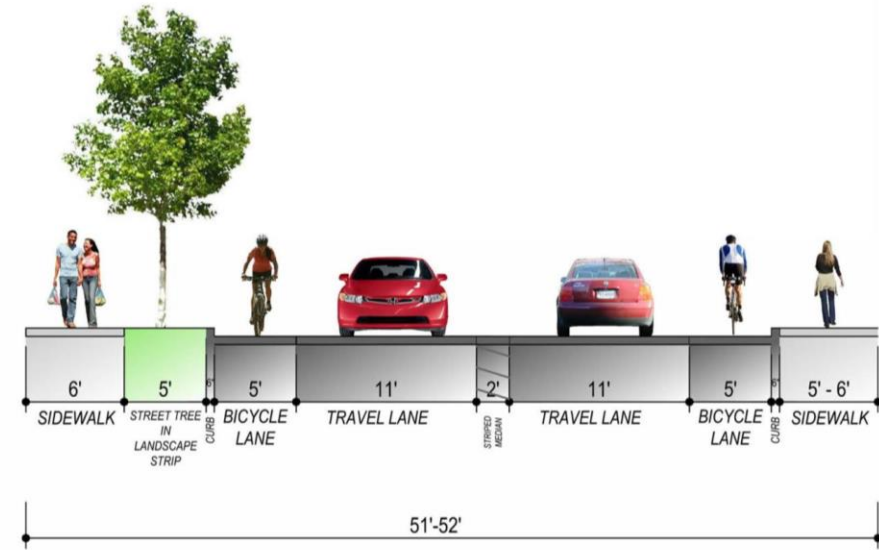


Recommended Preliminary Design

9th Street NE/E. High Street



SECTION C - 9TH ST. BETWEEN MARKET ST. AND E. JEFFERSON ST.



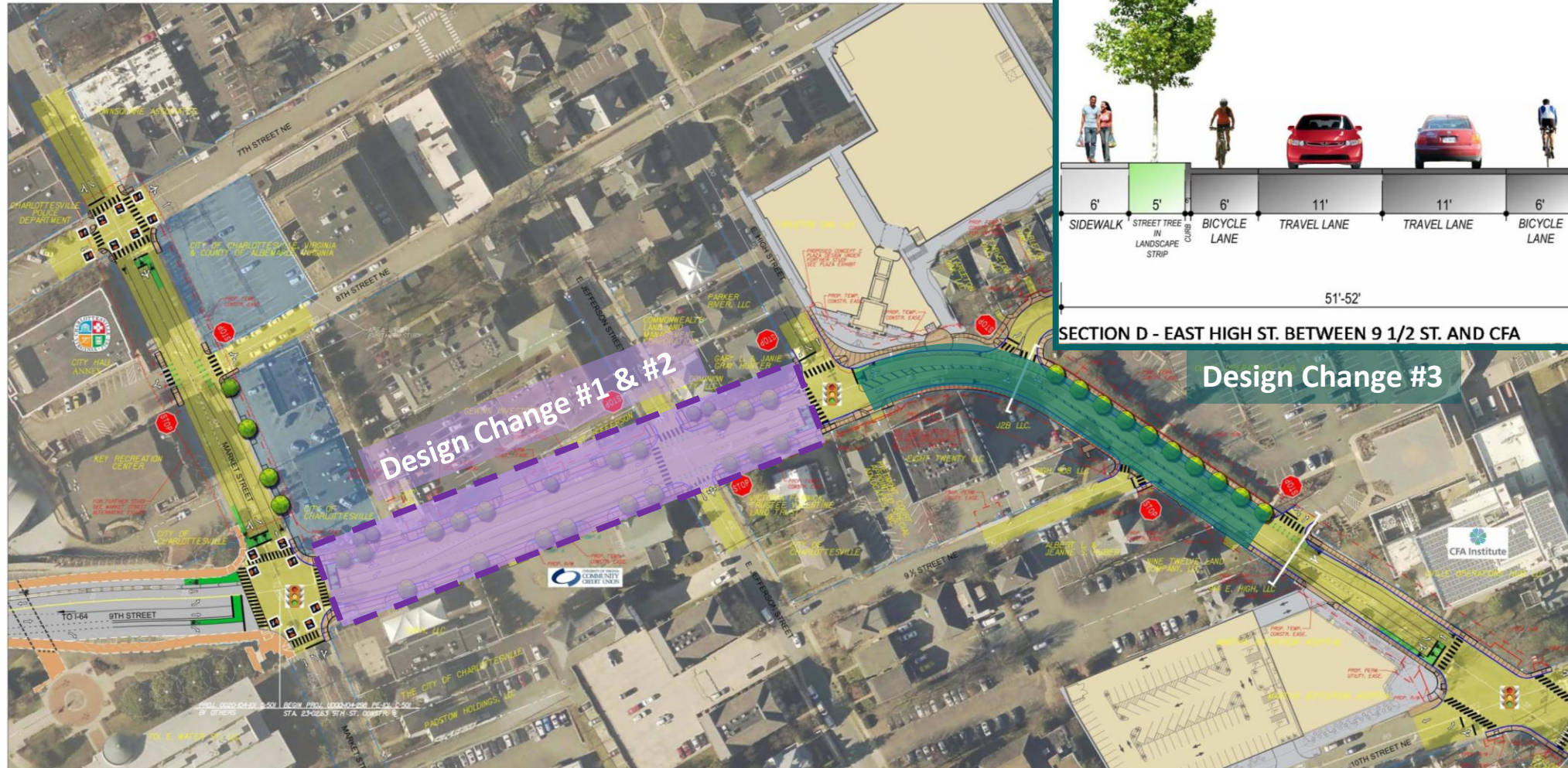
SECTION D - EAST HIGH ST. BETWEEN 9 1/2 ST. AND CFA



Recommended Design Changes Based on Public Hearing Comments



Design Changes Summary



Design Change #1 & #2 - Public Hearing Feedback on Planting

Key Takeaways

- Encourage the use of native trees
- Consider pedestrian comfort and safety
- Desire for larger trees rather than understory

• Priorities

1. Large trees for shade
2. Native tree varieties

• Challenges

1. Adequate soil volume available for large trees
2. Overhead electric utilities (if not underground)



Design Change #1 & #2 - Revised Planting Palette

- Proposed Canopy Trees
Potential Species:
- Sweet Gum
L. styraciflua 'Rotundiloba'
- Scarlet Oak
Q. coccinea
- American Linden
T. americana
- London Plane Tree
P. x acerifolia 'Bloodgood'
- Willow Oak
Q. phellos 'Hightower'

- Proposed Understory Trees
Potential Species:
- Flowering Dogwood
C. florida
- Serviceberry (multi-stem)
A. grandiflora
- Eastern Redbud
C. canadensis
- American Hornbeam
C. caroliniana
- Winter King Hawthorn
C. viridis 'Winter King'

Note: Tree species selected are consistent with Charlottesville's Master Tree List

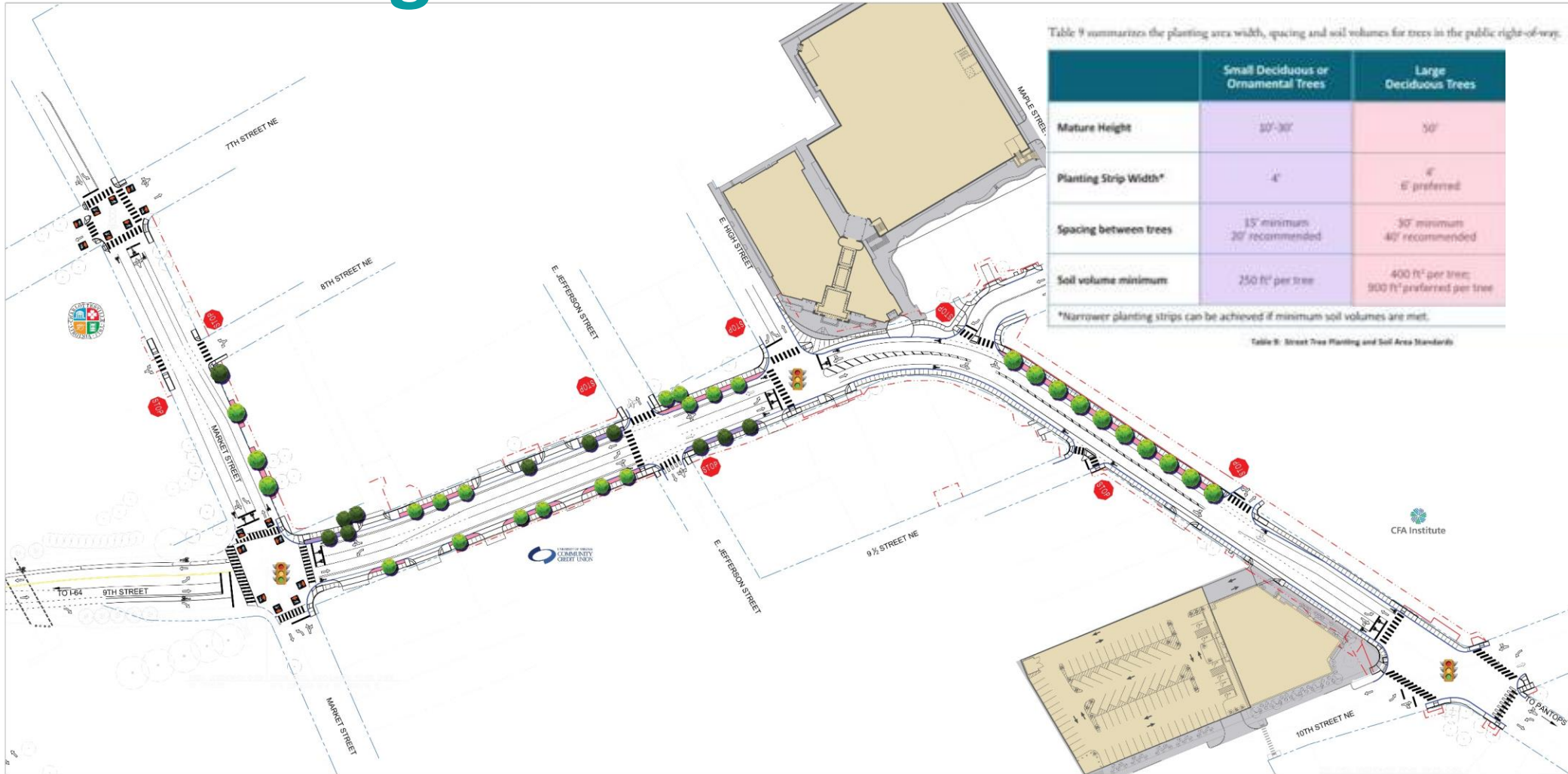


Table 9 summarizes the planting area width, spacing and soil volumes for trees in the public right-of-way.

	Small Deciduous or Ornamental Trees	Large Deciduous Trees
Mature Height	20'-30'	50'
Planting Strip Width*	4'	6' preferred
Spacing between trees	15' minimum 20' recommended	30' minimum 40' recommended
Soil volume minimum	250 ft ³ per tree	400 ft ³ per tree; 900 ft ³ preferred per tree

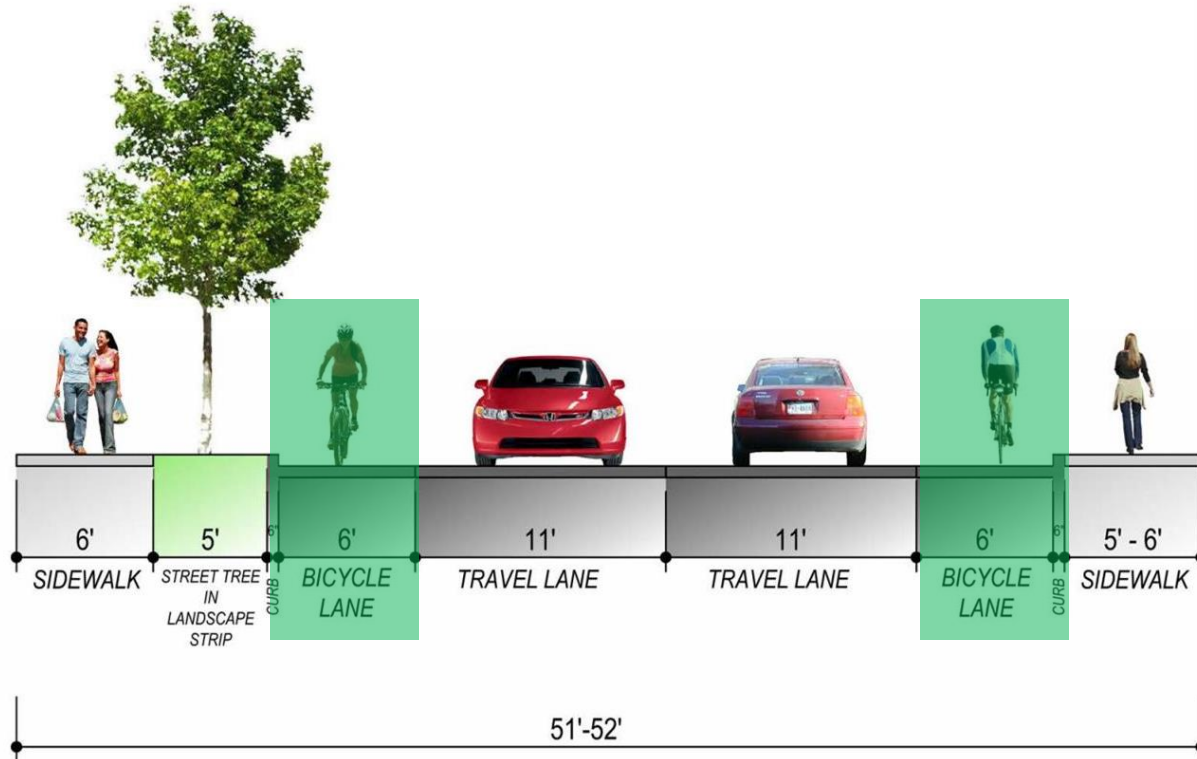
*Narrower planting strips can be achieved if minimum soil volumes are met.

Table 9: Street Tree Planting and Soil Area Standards



Design Change #3

E. High Street



1. Eliminate 2' wide striped median from E. High intersection to CFA Institute Entrance.
2. Widen proposed bicycle lane from 5' to 6'.

SECTION D - EAST HIGH ST. BETWEEN 9 1/2 ST. AND CFA

